



November The Antlers

Monthly Publication of Hagerstown Elks Lodge No. 378
Benevolent and Protective Order of Elks

In Our 114th Year

Volume XIII Issue 1 Chartered July 7, 1897

Hagerstown B.P.O.E. Lodge 378
11063 Robinwood Drive
Hagerstown MD 21742
WWW.ELKS378.ORG

Dear Members,

We are heading into the cold months of the year, not much to do outside. Perfect time to come into the lodge and support this great organization. We have some great events for you to come out and enjoy, all the details are included in the bulletin. The bulletin, which I have discussed in the past needs addressed again. The bulletin is not getting to you in a timely manner due to the changes in the post office bulk mail facilities. This problem is just going to get worse. If the bulletin is not getting to you in a timely manner it becomes an ineffective tool to advertise our events. We send out over 1,300 bulletins a month, most are not getting to you until the second week of the month. The decision has been made to correct this problem. The bulletin will still be done every month. There will be three ways for you to receive the bulletin free. You can get it via e-mail, access it via our website or come in to the lodge and pick up a copy. If you want to continue to receive it via mail, they will be sent first class and the cost will be your responsibility. This change will take effect with the January 2012 Antlers. If you want to continue to receive the Antlers via First class mail, the cost will be .50 cents per month. This needs paid to Nina Garrett no later than December 15, 2011. The total for the remaining lodge year and next lodge year is \$7.50. If you want to sign up to receive via e-mail, contact me at wbach-tell@comcast.net.

Our website is currently being upgraded thanks to the Ladies of the Elk's. The new website will enable us to update it frequently. This will be a great way for you to see current events, future events, pictures of events and show prospective members what we do as an organization. We are a Lodge, but must operate like a business to remain successful. We must continue to recruit new members for the future of the Lodge. Please read Chuck Koeneke's message on page 2.

We will be having our first ever Veterans Ceremony on Nov, 11 at 11am. Details on pg 4. Come out and support our veterans.

William Bachtell
Exalted Ruler 2011-2012



November Events

Friday, Nov 4
Turkey and Ham Prize night

Monday, Nov 7
LOTEA meeting

Friday, Nov 11
Veteran's Day at the Elks

Saturday, Nov 12
Turkey and Ham Prize night

Sunday, Nov 13
Bar Bonanza

Thursday, Nov 24
Thanksgiving/Buffer

Saturday, Nov 26
"Solid Gold" Dance

Monday, Nov 28
ENF Basket Bingo

December Events

Saturday, Dec 3
Spaghetti Feed

Saturday, Dec 17
Christmas Dance
"Spectrum"

Thursday, Dec 22
BINGO Guaranteed Jackpot
Payouts

LODGE HOURS

Hours will be addressed by the board and adjusted as necessary.

Monday thru Thursday 11-11 Friday & Saturday 11-12 Sunday 11-8

Every 1st and 3rd Tuesday of the Month

Board Meeting 7:00 pm

Thursdays

Every 2nd and 4th Tuesday of the Month

Lodge Meeting 7:30 pm

Bingo - Doors open at 5:30



SUNDAY BRUNCHES 11 am - 1:15 pm

Adults: \$11.95 Children: 6-12 yrs. \$6.00

Children 5 yrs & under—Free



Officers 2011-2012

Exalted Ruler	William Bachtell
Est. Leading Knight	Eric Burnette
Est. Loyal Knight	Terry Grove
Est. Lecturing Knight	Linda Cauldell
Secretary	Nina Garrett
Treasurer	Jerry Hose
Tiler	Joseph Beach, PER
Esquire	David Martin
Inner Guard	Ed Taylor
Chaplain	Dorothy M. Miller
Presiding Justice	Arthur Schneider
Organist	Jim Powers

Trustees

David L. Kauffman, PER
 Waler Shepherd, PER
 Bernie Brusko
 Carroll Keller
 G. Scott Davis

Living Past Exalted Rulers

Irwin F. Hoffman 1956-57	W. Lee Ridenour 1997-98
Ronald L. Miller 1960-61	James G. Ensminger 1998-99
Charles L. Mobley, Jr. 1964-65	Joseph H. Shaw 1999-00
Charles R. Miller 1966-67	Robert B. O'Kane 2000-01
Terry L. Chrisman 1974-75	David L. Kauffman 2001-02
John A. Werking 1976-77	Michael E. Barnes 2003-04
Laurin E. Potter, Jr. 1979-80	G. Gerald Morrow 2004-05
Kenny Maynard 1980-81	Scott A. Wishard 2005-06
Mark F. Pryor, Jr. 1983-84	Joseph A. Barresi, Jr. 2006-07
Francis P. Clopper 1984-85	James Burroughs 2007-08
Terry R. Grossnickle 1985-86	Bryan Kenworthy 2008-09
David B. Shrader 1986-87	Waler L. Shepherd 2009-10
George W. Hamilton 1987-89	Melita E. Wishard 2010-11
Walter R. Miller, Jr. 1990-91	
Gregory A. Wilkes 1992-93	
Joseph Beach 1993-94	
Charles Koeneke, Jr. 1994-95	
J. Robert Hyssong, Jr. 1995-96	
Waler L. Shepherd 1996-97	

Buffet Breakfast

**Every Saturday
 Cost \$6.75**

Starts 7:30 am until 10 am.

All you can eat.

**Bloody Mary's & Mimosa's
 will be available**

**Breakfast coupons will be offered.
 Buy 9/10th one free.**

MITCH



0 HOUR

Note: To win the "0" hour you have to be present at the lodge meeting, been admitted to a nursing home, working or attending an Elk function.

September 2011

October 2011

Katie Wisegarver	6724	Charles Souders	5787
Harlod Talhelm	4669	Harold Jones	6137
Brian Wagaman	7217	Walter Atherton	2102
Judson Smith	5273	Robert Gossard	4947
John Ryder	6593	Glen Crawford	4035
William Forrest	3506	James Showers	3357
Brent Myers	7115	Paul Lutz	5355

DEATHS

Woodrow H. Hawbecker
 Born: July 30, 1935
 Initiated: October 25, 1988
 Died: September 14, 2011

John E. Canfield
 Born: December 29, 1935
 Initiated: February 6, 1973
 Died: October 8, 2011

Life Membership

The following person has petitioned the Lodge for Life Membership which was read on the Lodge Floor on September 27th and will be voted upon November 8, 2011 Lodge meeting. He is certified and meets all the requirements for Life Membership:

William F. Park.

Nina A. Garrett
 Secretary

**JOIN THE ELKS FAMILY
 MEMBERSHIP IS EVERYONE'S BUSINESS**

As the heading reads, "Membership is Everyone's Business"! Your Lodge needs your support by sponsoring new members. To help you sponsor a new member, a special envelope packet has been prepared and contains a Membership Application with information on the initiation fee and annual membership dues. The special envelope packet is available at the Lodge as well as from Lodge Officers. Of special note, the initiation fee was reduced from \$100 to \$50 to serve as incentive when talking to potential candidates who you are encouraging to apply to our Lodge.

In addition, as another incentive for members to sponsor candidates, a special social quarters gift certificate drawing for \$25 will be held in March 2012 for the sponsors of new members during the November 2011-March 2012 timeframe. This drawing is in addition to the \$25 social quarter's gift certificate drawing held the night of initiation of new candidates. At the September initiation of candidates, Selana Luther's name was drawn for the \$25 gift certificate for sponsoring a new member.

So, invite someone you know to JOIN THE ELKS FAMILY!

Chuck Koeneke,
 Chairman, Membership Committee

Material for The Antlers may be placed in the bulletin mail slot outside the lodge office. Deadline for handwritten material is the **5th** for the following month. Material may also be emailed to: wbachtell@comcast.net (Subject: first word "ELKS") by the **10th** for the following month. **Letters to the Editor** MUST include the submitter's name and membership number.

Published by:
 William A. Bachtell
 Exalted Ruler
 William A. Bachtell, Editor

President.... Nina Garrett
Vice Pres.... Gary Carter
Secretary.....Nancy Newkirk
Asst. Sec.....Betty Wurster
Treasurer....Dot Miller
Asst. Treas..Bill Griemsmann
Co-Chaplain...Eileen Renwick
Co-Chaplain...Pat Hicks
Parliamentarian...Joeseph Barresi
Coordinator....
Hospitality.....Gary Carter
David Martin

Ladies of The Elks and Associates

The weather has turned cool and the rain doesn't seem to stop. This is the season for us to be busy. We are off to a great start for our fundraising. We have had the pie and cake night in the lounge and the sandwich and dumpling sale is over. Next, is the annual bonanza and hopefully it will be a success for us also. November brings us the Christmas Bazaar in which we will need lots of volunteers. Check your calendars and plan to give us some of your time. Thanks!

The Pie and Cake Night brought us over \$500! I want to thank all the individuals who helped us. Space doesn't all for individual thank yous. The Ham Sandwich and Apple Dumpling sale has netted us about \$900. Grace Hull did a fantastic job! Thank you to all the ladies who came and helped assemble the ham sandwiches.

The Annual Christmas Bazaar will be held on November 12, 2011. I have full floor of vendors for the day. Set up for the Bazaar will be Friday, November 13, 2011 at 9 AM. We need volunteers to work on that date setting up tables and chairs as well as on Saturday early in the morning. We open the doors at 7 AM. Mark your calendars and plan on what you would like to make for our lunch counter or/and our sweet table; we really need soups and sandwiches. Gus Shipley is handling the breakfast workers and Gary Carter is handling the food end of the Bazaar and he needs volunteers to work lunch and serve food. Contact him to volunteer or donate at his restaurant (301-790-0030). Ginny Rodgers needs donations for the Sweet Table. Please bring them in on Friday or Saturday early. All of the proceeds will go to charities in our county. Get excited and jump in and plan to help to make this a huge fundraiser for OUR organization.

We have the king sized handmade quilt embroidered by several of our talented members for which we are raffling off at the Bazaar. You received your raffle tickets at the September Dinner Meeting, if you need more contact Dottie Miller. We usually make a third of our profits at the bazaar with this raffle so let's do our best. (If you can't sell them make a gesture and buy them yourself as many of us do.)

Debbie Barresi has taken charge of the White Elephant Table and is looking for good items again this year. Check your closets and cupboards and bring something to the next meeting to add to our collection for the bazaar.

Nina Garrett, President
301-733-9509

Bar Bonanza Sunday November 13th at 6pm.

Come early and enjoy the snacks we put out at 5:30pm.

Drawing starts at 6pm. WE ONLY SELL 74 TICKETS and the number 75 ticket is raffled the night of the event and that ticket will be in the final five. You can win lots of money with the top prize of \$400.00. The 1st and 50th number drawn will be for \$50.00. The 10th, 20th, 30th 40th, 60th and 70th number will win \$20.00. Lots of good food at half-time. Come join the fun and Enjoy Tammie's great Slippery Chicken Pot Pie; Cole Slaw and Pumpkin Rolls for dessert.

The Treasure Chest Every Wednesday at 7:30 pm

Buy tickets during the week at the bar (must buy at least two tickets) and you can buy right up till the drawing time at 7:30pm. GET YOUR NAME IN THE BOX! THE POT IS BUILDING!! Thanks to all who have volunteered to help!

Monday Night Football Night

The Bar continues with good food each Monday game night. November 7th we will have Kris's Chili and Hot Dogs and on the 14th we will have Tammie's great Meatball Subs. The 21st we will have Steamers and Mac & Cheese. The 28th soup and cold cut sandwiches.

Linda Caudell,
Lecturing Knight

November 2011

Sun	Mon	Tue	Wed	Thu	Fri	Sat
		1 LODGE OPENS 11 AM BOARD MTING 7	2 LUNCH-DINING RM CHICKEN BUFFET	3 LUNCH-DINING RM BINGO 5:30 PM CHICKEN/SURPRISE BUFFET	4	5 LUNCH-DINING RM BREAKFAST BUFFET Shrimp/Scallop Combo Liver w/Onions & Bacon w/Gravy
6 BAR BINGO 5-7:30 PM SUNDAY BRUNCH 11 TO 1:15	7 LODGE OPENS 11 AM	8 LODGE OPENS 11 AM LODGE MTING 7:30	9 LUNCH-DINING RM CHICKEN BUFFET	10 LUNCH-DINING RM BINGO 5:30 PM CHICKEN/SURPRISE BUFFET	11 LUNCH-DINING RM 1 1/2 lb of Crab Legs Country Fried Steak w/Pepper Gravy	12 LUNCH-DINING RM BREAKFAST BUFFET
13 BAR BINGO 5-7:30 PM SUNDAY BRUNCH 11 TO 1:15	14 LODGE OPENS 11 AM	15 LODGE OPENS 11AM BOARD MTING 7	16 LUNCH-DINING RM ELKS BIRTHDAY DIN- NER	17 LUNCH-DINING RM BINGO 5:30 PM CHICKEN/SURPRISE BUFFET	18 LUNCH-DINING RM Stuffed Trout Beef Tips over Noodles	19 LUNCH-DINING RM BREAKFAST BUFFET
20 BAR BINGO 5-7:30 PM SUNDAY BRUNCH 11 TO 1:15	21 LODGE OPENS 11 AM	22 LODGE OPENS 11 AM LODGE MTING 7:30	23 LUNCH-DINING RM CHICKEN BUFFET	24 THANKSGIVING BUFFET	25 LUNCH-DINING RM Salmon Oscar NY Strip Sauté Supreme	26 LUNCH-DINING RM BREAKFAST BUFFET
27 BAR BINGO 5-7:30 PM SUNDAY BRUNCH 11 TO 1:15	28 LODGE OPENS 11 AM	29 LODGE OPENS 11AM	30 LUNCH-DINING RM CHICKEN BUFFET	31 LUNCH-DINING RM BINGO 5:30 PM CHICKEN/SURPRISE BUFFET		



HAPPY BIRTHDAY MEMBERS



The Officers and Members of Hagerstown Lodge No. 378 cordially invite all Elks having birthdays on this month to a dinner held in your honor.

November Birthday Buffet Wednesday, November 16, 2011

TICKETS REQUIRED - pick up in person or order by mail

Deadline for Reservations - Monday, November 14, 2011 No Phone Reservations / No Refunds after Tuesday, November 15, 2011

ELK MEMBERS ONLY NO TAKEOUTS

*Please Do Not Remove Name Signs From Tables All Guests Must Be Elk Members in Good Standing
Cost for Each Guest - \$7.50*

NOVEMBER BIRTHDAY BUFFET DINNER

CHICKEN, HAM w/PINEAPPLE
POTATO
VEGETABLE, COLESLAW
ICE CREAM & CAKE

DECEMBER BIRTHDAY BUFFET DINNER

CHICKEN, PORK/SAUERKRAUT
POTATO
VEGETABLE, APPLE SAUCE
ICE CREAM & CAKE

LODGE VALENTINE DANCE SATURDAY, FEBRUARY 11, 2012

WITH SOFT DANCE MUSIC BY
THE LARRY ANGEL QUARTET

8:00PM-11:00PM

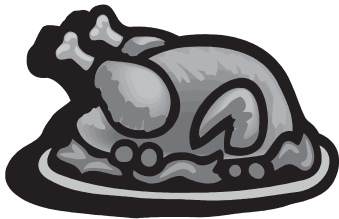
\$5.00 Per Person in Advance and \$7.00 Per Person at the Door

Tickets will be available in the Lodge Office starting on January 1, 2012

Reservations are encouraged

Dance is for members and their guests

Dance Sponsored by the PER Association Fundraiser with Proceeds Used for PER Charity Fund



ELKS LODGE # 378
FINANCE COMMITTEE PRESENTS

TURKEY AND HAM PRIZE NIGHTS

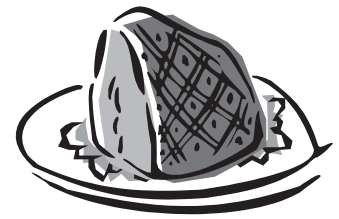
FRIDAY, NOVEMBER 4, 2011
AND

SATURDAY, NOVEMBER 12, 2011

BOTH DAYS THE FUN BEGINS AT 6:00 P.M. UNTIL ?

DON'T MISS THESE DATES !!!!!

MITCHELL GEARHART
FINANCE CHAIRMAN



TV Line Inspection
Complete Drain
Cleaning



Septic Rejuvenation
High Pressure
Flushing

AND AWAY GO. TROUBLES DOWN THE DRAIN

Trusted and Recommended Since 1935

RICK SWORD
Vice President/General Manager

Hagerstown 301-790-2313
Frederick 301-695-1750
Fax 301-790-3967



Prudential

Jeff Martin, ABR

Licensed in MD, PA
j.martin@myactv.net

Premier Realty

11949 Robinwood Drive, Suite 100, Hagerstown, MD 21740
Ofc 301 745-1620 Dir 301 745-1651
Cell 301 991-4488 Fax 301 223-8288
www.prupremierrealty.com

An independently owned and operated member of Prudential Real Estate Affiliates, Inc.



INNOVATIONS

(301) 992-9652 CELL, (301) 745-1515 FAX
(240) 420-6442 DIRECT
(301) 745-1500 OFFICE
FGetz@YourColdwellBanker.com

1850 Dual Highway
Hagerstown, MD 21740
www.YourColdwellBanker.com

FRANK GETZ, USN (Ret.), ESRESTM
REALTOR[®], Licensed in MD and PA

Each Office Is Independently Owned And Operated.



Professional Auctioneers & Appraisers
Since 1972



J.G. Cochran

AUCTIONEERS & ASSOCIATES LTD.

Thomas E. Bikle
Director of Marketing / Real Estate

7704 Mapleville Road
Boonsboro, Maryland 21713
Office: 301-739-0538
MD: (800) 310-2844
Cell: 301-667-2382
Residence: 301-432-6028

ALARMS FOR HOME AND BUSINESS



"We Protect America"

www.atlanticsecurity.net

800-237-3609 – 301-797-7700

MD21923928 * VA11-2836 * WV 012911 * PA 001617

Deborah Barresi

Realtor

1185 Mount Aetna Rd
Hagerstown, MD 21740
Phone: 301-745-4450
Fax: 301-745-4485

Licensed in MD & PA



Joan F. Bowers, AAMS[®]
Financial Advisor

Edward Jones
MAKING SENSE OF INVESTING



1101 Opal Court
Hagerstown, MD 21740
Bus. 240-420-8514 TF. 866-420-8514
Cell 301-730-8455 Fax 866-462-0420
joan.bowers@edwardjones.com
www.edwardjones.com



MONUMENTAL LIFE INSURANCE CO.

Linda Caudell
Sales Manager

Hagerstown MD Office - 84
1301 W Washington Street
Hagerstown MD 21740
Phone: 800-236-6894
Office: 301-739-2340
Cell: 301-964-1606
www.monlife.com/ml

an AEGON company

FUNK

Michelle Horst
Service Manager

- Residential
- Commercial
- Industrial
- Wiring
- Heating & Air Conditioning

ELECTRICAL SERVICES, INC.

Since 1978

P.O. Box 683
Hagerstown, MD 21741
301-739-7836 • Fax: 301-797-6978
funk.electric@myactv.net

Saturday, December 3

All U can eat Spaghetti Feed

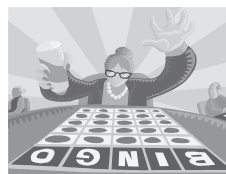
12:00 PM until 5:00 pm

Menu

**Spaghetti, Toss Salad, Garlic Bread,
Coffee, Tea or Soda**

\$8.00 Per Person

Pick up a ticket at the Lodge



BINGO

Every Thursday
Doors open @ 5:30

New Format and Payouts
Payouts \$100.00 A Game
\$1000.00 Jackpot Game

**December 22, 2011 There will be 2 / 1000,00 dollar
payout jackpots guaranteed !!!!**



NONPROFIT ORG.
U.S. POSTAGE
PAID
HAGERSTOWN MD
PERMIT NO. 424

Hagerstown Lodge No. 378
B.P.O. ELKS
11063 Robinwood Drive
Hagerstown, Maryland 21742-6794
(301) 739-0844



Thanksgiving Day Buffet
Reservations Required
Noon till 2:00
Adults \$16.00 / Ages 6 to 12 \$8.00
5 and under free
Menu

Turkey	Stuffing
Ham	Pork
Scrod	Chicken
Mac & Cheese	Mashed Potatoes
Green Beans	Corn
Sauerkraut	Sweet Potatoes
Toss Salad	Fresh Fruit
Desserts	Rolls w/butter
Cranberry Sauce	

Dining Room 11 till 1:30

- Turkey w/stuffing
- Ham Steak w/ pineapple sauce
- Turkey Ham Combo
- Chicken
- Crab cake/Shrimp Combo
- Entrée's served w/ veggie & house salad or 2 veggies

Monday November 28, 2011
Elks National Foundation
Basket Bingo

\$15.00 a person

Tickets on Sale Now at the Lodge
Includes Meal

Menu
Chicken
Potato
Jell-O
Coleslaw

Doors open at 4:00

Meal served 5:00 to 6:00

Early Birds (priced separate) 6:15
Regular Bingo follows early birds